

# CODE DDS Designer

Jon Paris and Susan Gantner

Jon.Paris @ Partner400.com  
Susan.Gantner @ Partner400.com  
www.Partner400.com



## **CODE Designer**

---



### **Graphical design tool to create and maintain**

DDS source for:

*Display files*

*Printer files*

*Physical files*

### **Full GUI interface**

*Lets novice create DDS quickly and easily while giving expert access to all the features of DDS*

### **Many ways to get into CODE Designer**

*Directly from Windows*

*Start ... Programs ... IBM Websphere Studio ... Development Studio Client for iSeries ... CODE ... CODE Designer*

*From CODE Editor or Project Organizer*

*Design DDS Screens (File menu)*

*From WDS Remote Systems Explorer*

*Open with ... CODE Designer*

---

# Overview of Designer



**file level**

**record level**

**more records**

**DDS Tree**

**Details page**

Field	Position	Length	Type	Shift	Usage	Sampl
'PRG01'	2, 5	5	Text constant			PRG0
'Time R...System'	2, 30	21	Text constant			Time f
'DATE'	2, 70	6	Date constant			YY/M
'Mainte...ection'	3, 30	21	Text constant			Maint
'TIME'	3, 70	6	Time constant			HH:M
'Enter ...intain'	6, 14	54	Text constant			Enter
EMPAPL	9, 25	1	Alphanumeric	A - Alphanumeric	Both	B
'Employ...enance'	9, 28	27	Text constant			Empl
PRJAPL	10, 25	1	Alphanumeric	A - Alphanumeric	Both	B
'Projec...enance'	10, 28	26	Text constant			Projec
RSNAPL	11, 25	1	Alphanumeric	A - Alphanumeric	Both	B
'Reason...enance'	11, 28	30	Text constant			Reasc
EMESS	21, 16	50	Alphanumeric	A - Alphanumeric	Output	000C
'F3-End of Job'	23, 7	13	Text constant			F3-En

**Selected DDS source page**

```

A* 89/03/02 12:07:25 DOUG REL-R01M02 5728-PW1
A* THE SELECT FORMAT ALLOWS SELECTION OF THE TIME REPORTING
A* MASTER FILE THE OPERATOR WANTS TO MAINTAIN
A
R SELECT
    
```

# Overview of Designer (continued)



**Insert -> Keywords (or F5) to see this view**

**Groups**

**Create keywords page lists all valid keywords for this level**

Keyword	Parameter
PRINT	
INDARA	
CA03	03 'end of job'
CA04	04 'return to maintenance selection'

Insert	Subset	All
ALTHELP	DSPRL	HLPTITLE
ALT PAGEDWN	ENTFLDATR	HOME
ALTPAGEUP	ERRSFL	IGCCNV
ALWGFH	HELP	INDTXT>>
CAnn/CFnn>>	HLPDOC	INVITE
CHECK(AB)	HLPFULL	MNUBARSW
CHECK(RL)	HLPPNLGRP	MNUCNL
CHECK(RLTB)	HLPRCD	MOUBTN>>
INPDFT	HLPRTN	MSGALARM
PRINONLY	HLPSCHN	MSGALOC>>
		WV/BORDER>>
		WRDWRAP
		WINKRWN>>

## What is a Group?

Partner400

A group of record formats that are used together to create a single screen or report image

Formats that overlay each other

Subfile + Subfile Control records

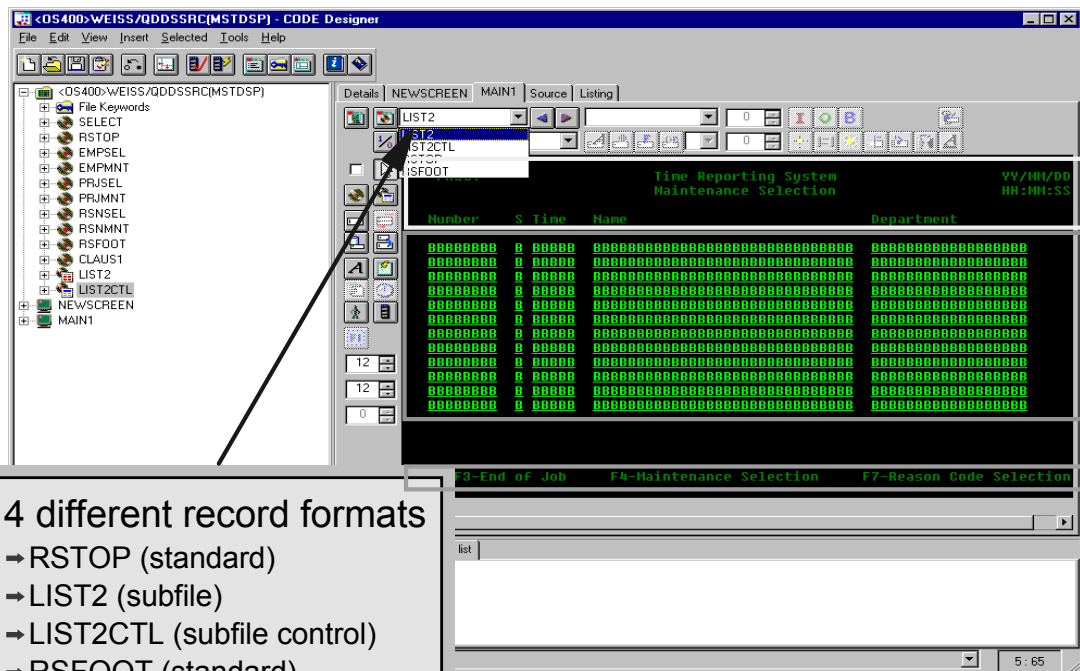
Detail and summary print formats

Groups control the design image tabs in the designer

You must put a record format in a group to use the WYSIWYG design view

## Designer Group: Multiple Record Formats

Partner400

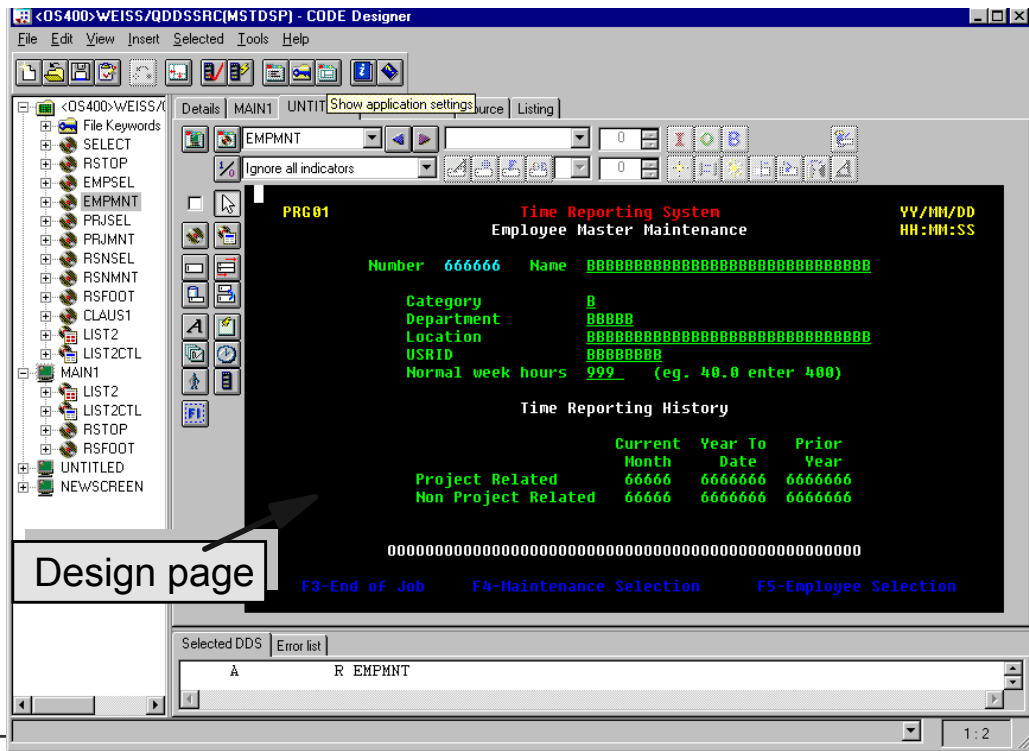


The screenshot shows the CODE Designer interface for a project named '<OS400>WEISS/QDDSSRC(MSTDSP) - CODE Designer'. The left pane shows a tree view of record formats, including LIST2, LIST2CTL, and RSFOOT. The main window displays a preview of the screen layout, showing a table with columns for Number, S, Time, Name, and Department. The table is filled with placeholder text (B's). Below the table, there are menu options: F3-End of Job, F4-Maintenance Selection, and F7-Reason Code Selection. A callout box points to the record format list in the left pane.

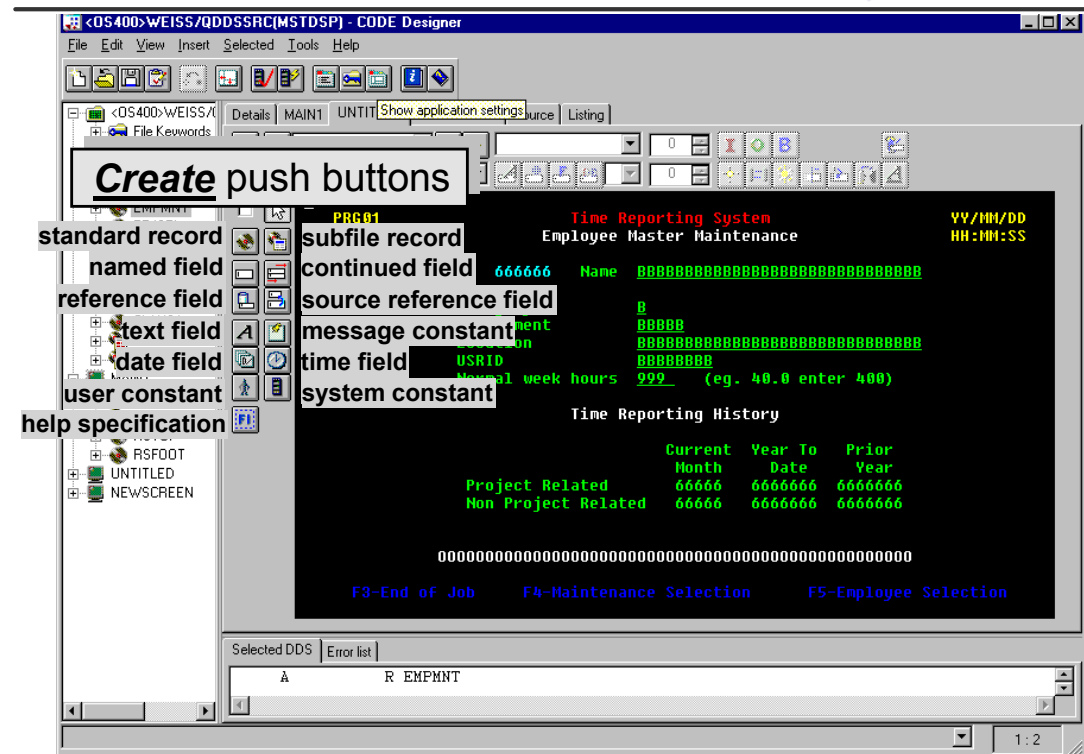
4 different record formats

- RSTOP (standard)
- LIST2 (subfile)
- LIST2CTL (subfile control)
- RSFOOT (standard)

# The Design Page - Display File

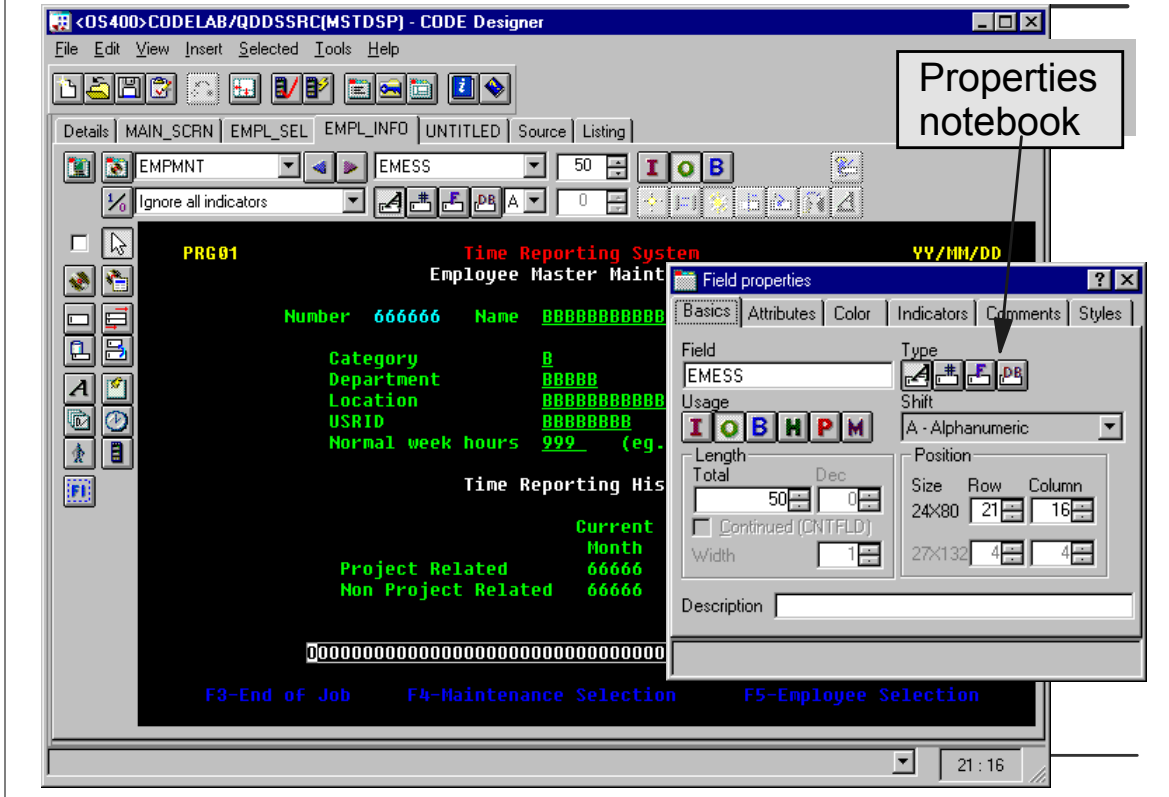


# The Design Page - create pushbuttons



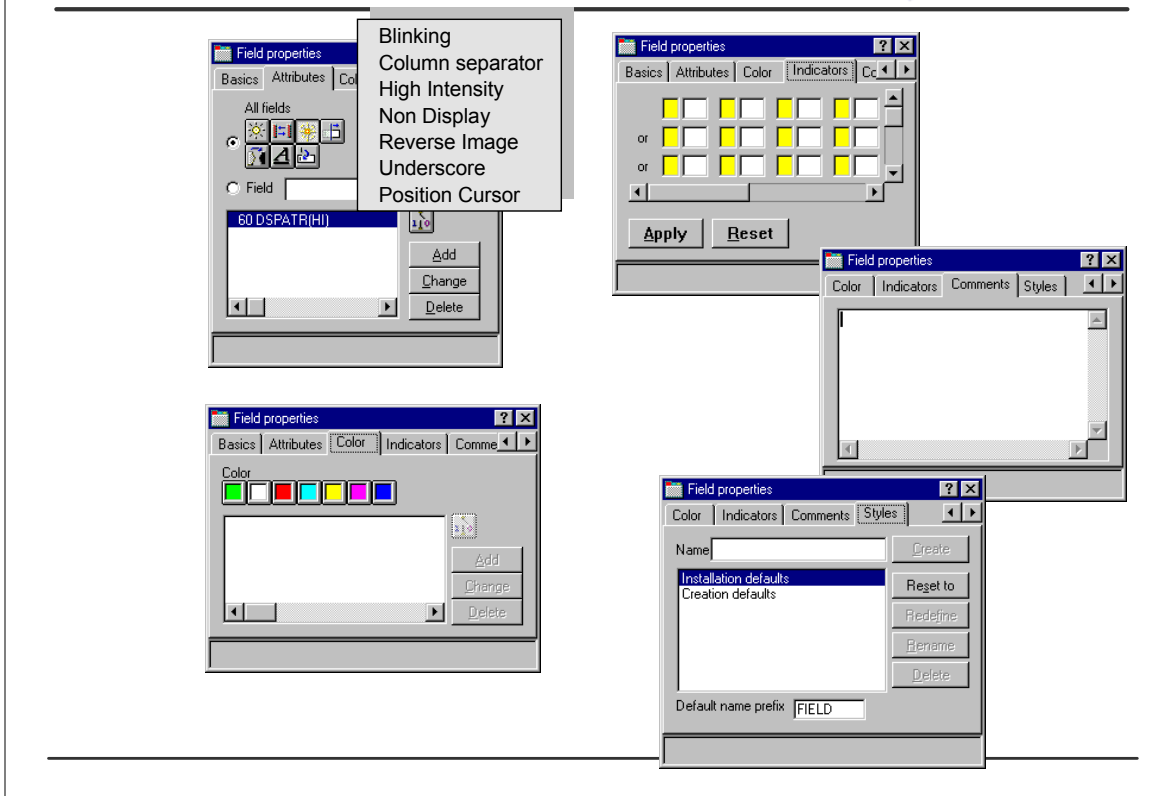
# The Design Page - Display File

Partner400

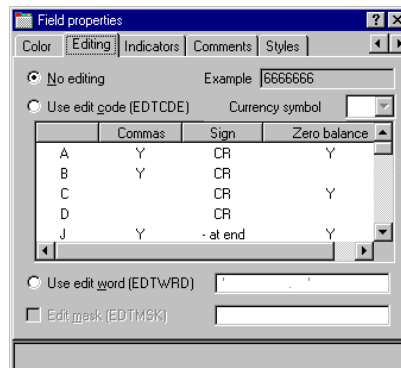
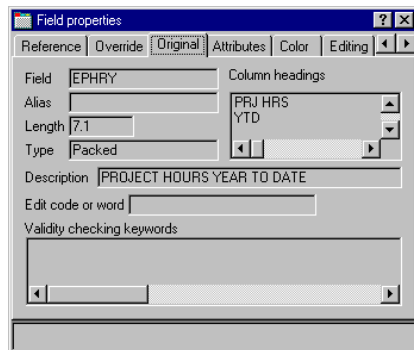
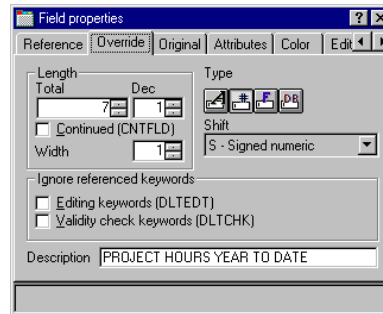
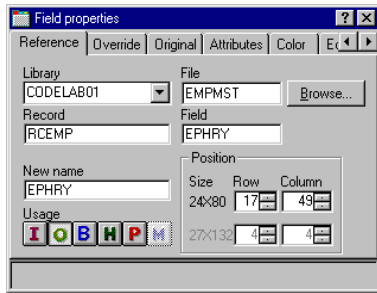


# Named fields - property notebook pages

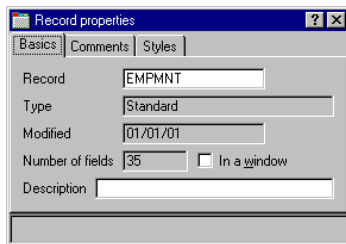
Partner400



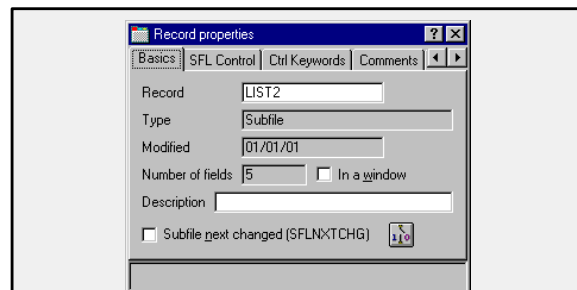
# Reference fields - property notebook pages



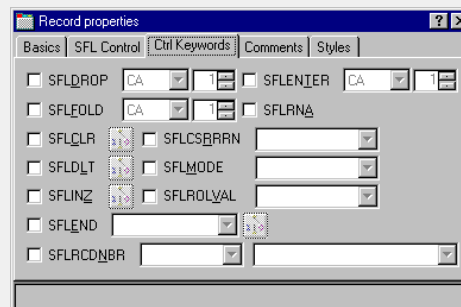
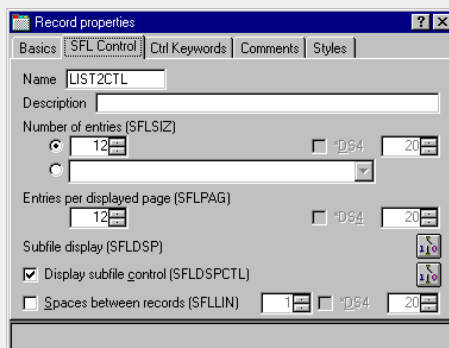
# Record - property notebook pages



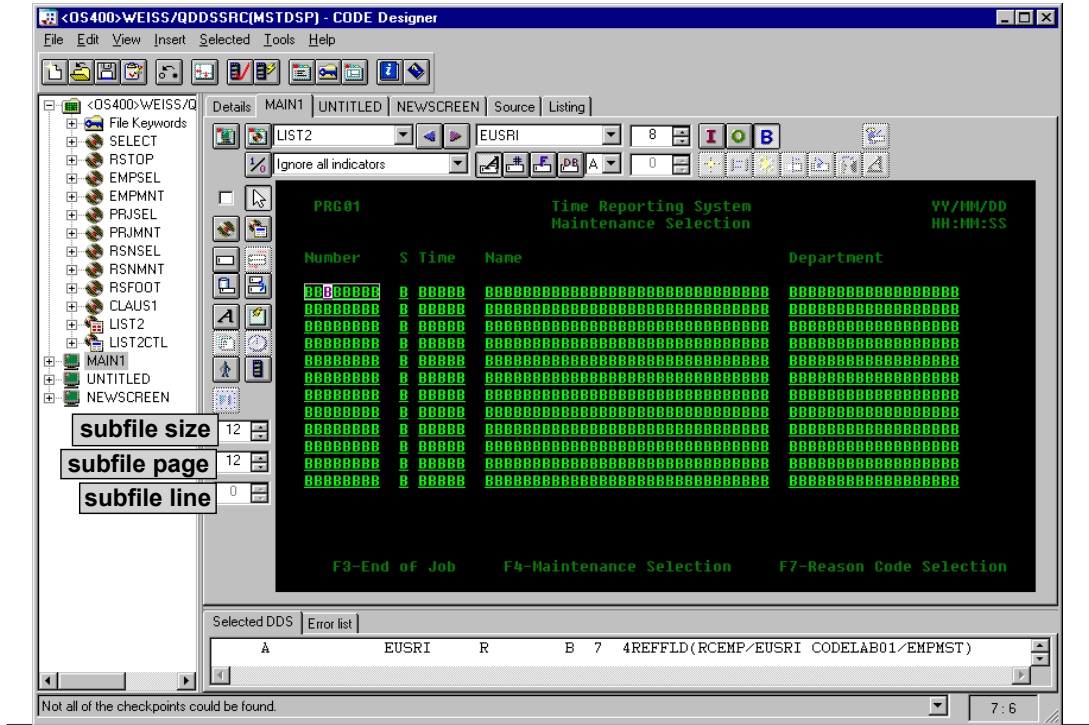
Standard record



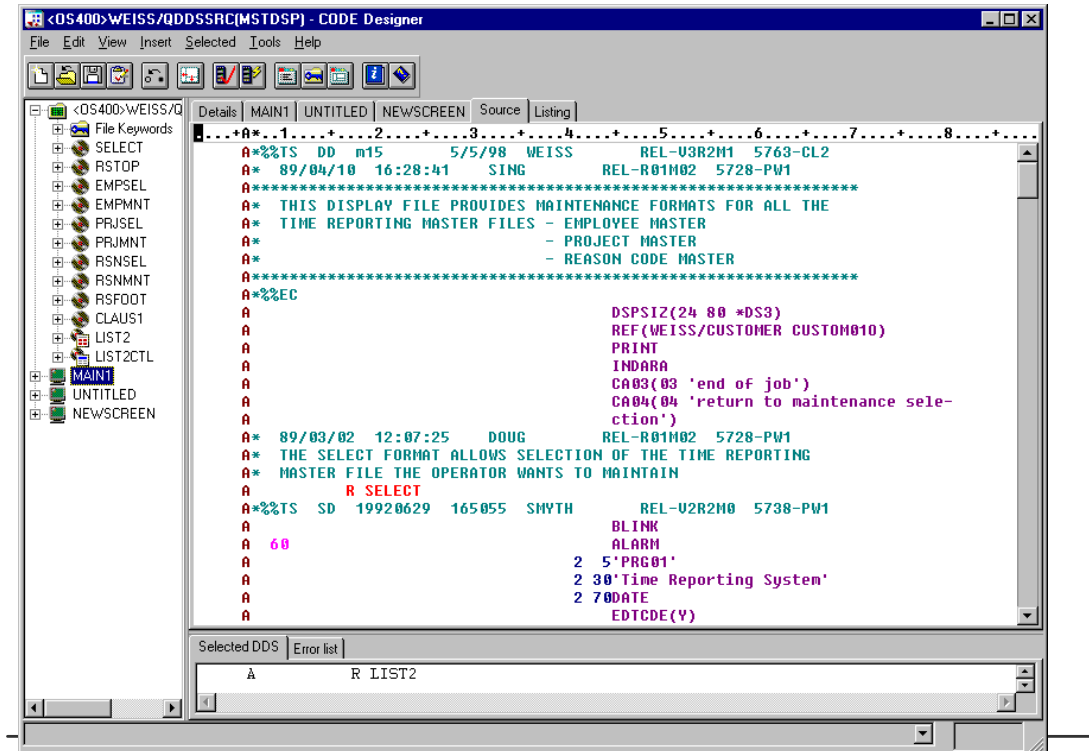
Subfile record



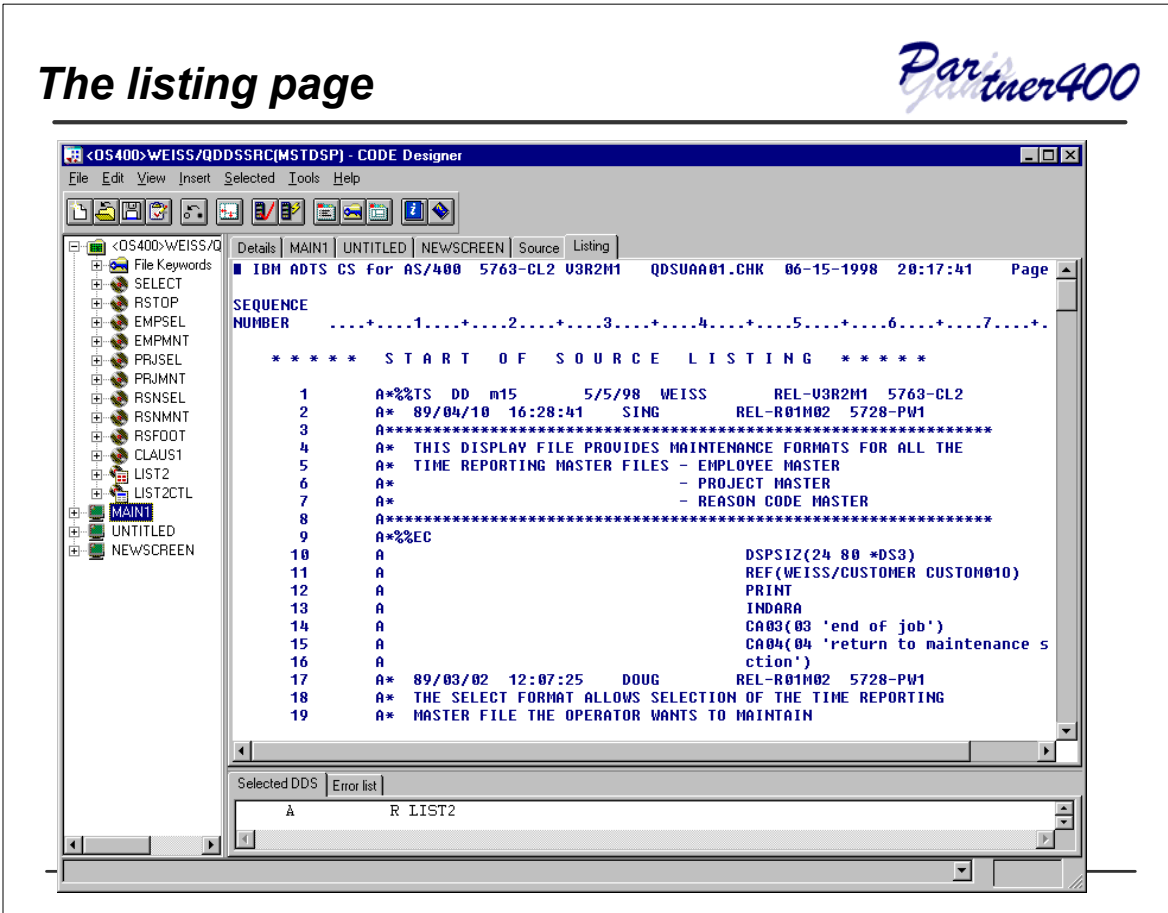
# The Design Page - Display File - Subfile



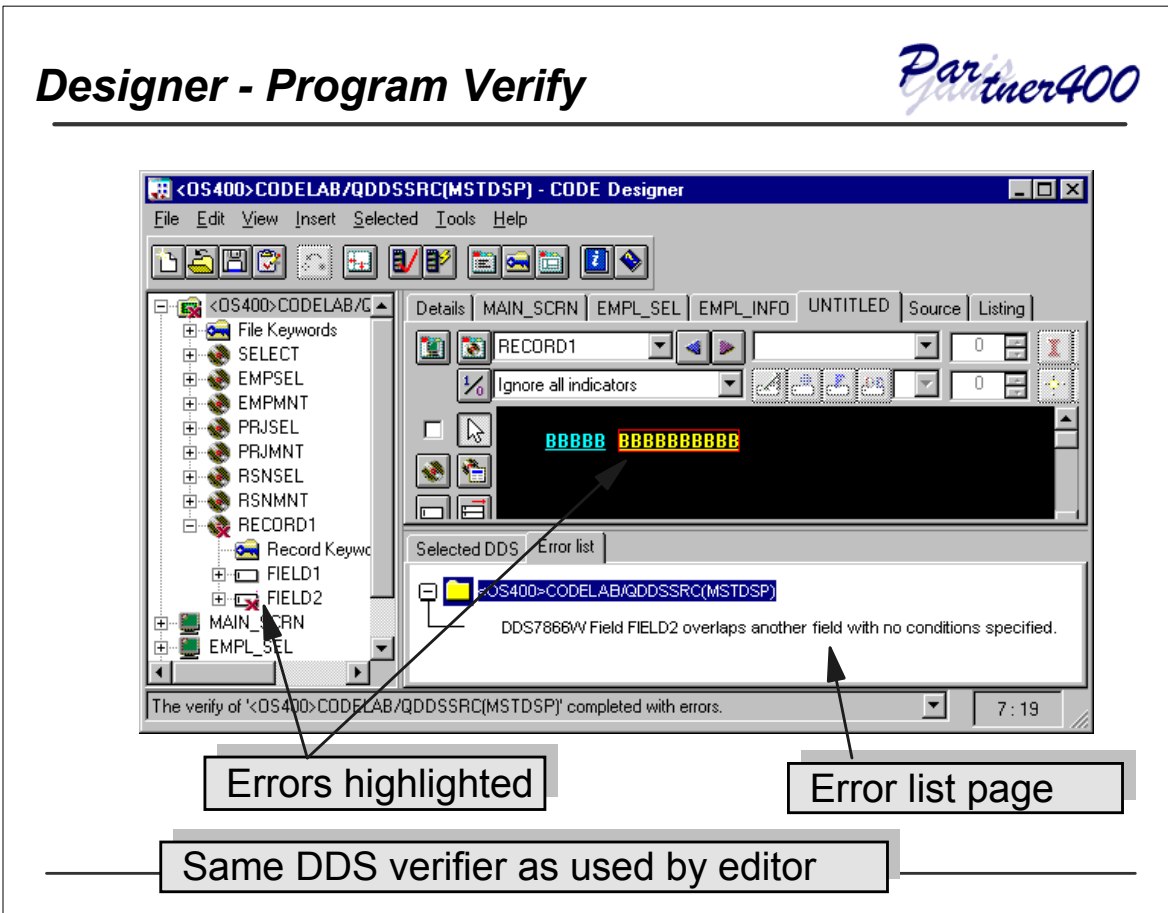
# The source view page



# The listing page



# Designer - Program Verify



# Integrated DDS Editor



Single click back to design mode

Single click verify

Full power of editor

Integrated error feedback

```

Row 13      Column 52      Replace 1 change.
-----
A* TIME REPORTING SYSTEM FILES.  THESE DEFINITIONS WILL BE REFERE
A* BY WHEN CREATING THE SPECIFIC PHYSICAL AND LOGICAL FILES AS WE
A* BY SDA WHEN CREATING DISPLAY FORMATS.
A*****
A          R RCREF                TEXT('DATA BASE REFERENCE')
A*%TS DD 19990204  231630  REINHARD  REL-U3R2M2  5763-CL2
A* COMMON FIELDS
A          ACREC                1  B  TEXT('ACTIVE RECORD CODE')
A          COLHDG(ACREC )
00130DDS7508E Closing apostrophe missing for quoted string.
00140A          DATEFL            6  0B  TEXT('DATE FIELD')
    
```

DDS7520E Keyword COLHDG ignored because of error in list of values.

DDS7508E Closing apostrophe missing for quoted string.

The verify of 'C:\T015\CODELAB\QDDSSRC(REFMST)' completed with errors.

# Checkpoints



Snapshot of DDS source at a given point in time.

Two types: automatic and user-defined

User-defined checkpoints are saved between sessions.

You can 'revert' back to a checkpoint.

Certain 'drastic' changes in 'Edit Mode' (e.g. delete a record line) may get you in trouble!  
Revert to previous checkpoint in such cases.

Checkpoints taken in 'Design Mode'

Checkpoints taken in 'Edit Mode'

Description	Date	Time	Mode
Initial load	1999/03/01	15:17	Design
Design>Edit	1999/03/01	15:18	Design
edit-Design	1999/03/01	15:18	Edit
My First Checkpoint	1999/03/01	15:18	Design
Second Checkpoint	1999/03/01	15:18	Edit